

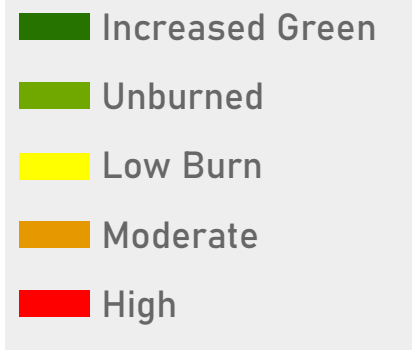
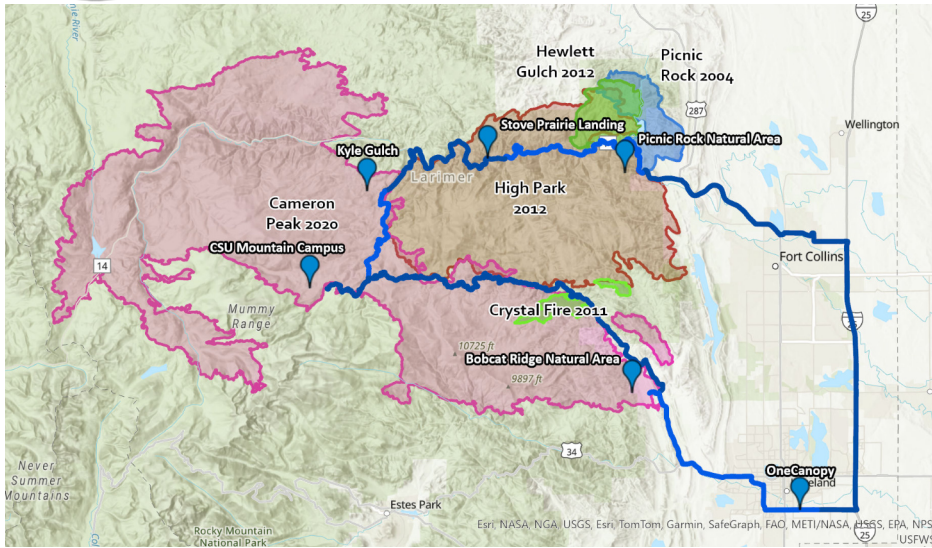


**HIGH  
ALTITUDE  
REVEGETATION**

# 2024 Summer Field Tour

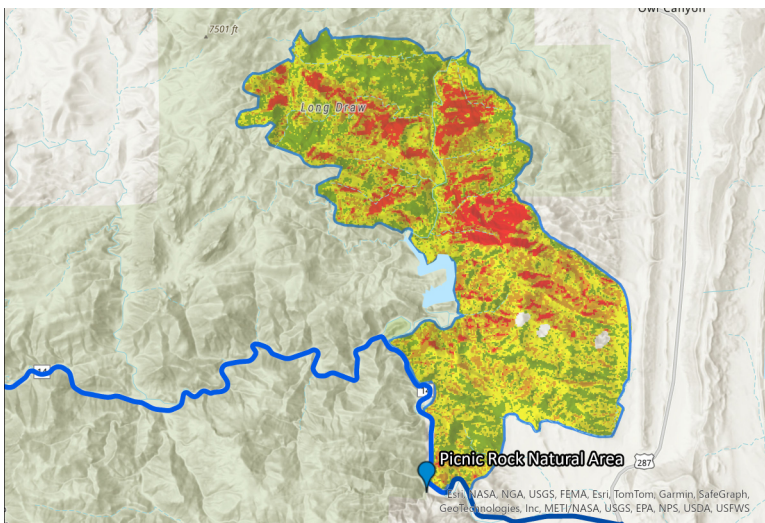
## Burn Area Information

### Overview & Legend



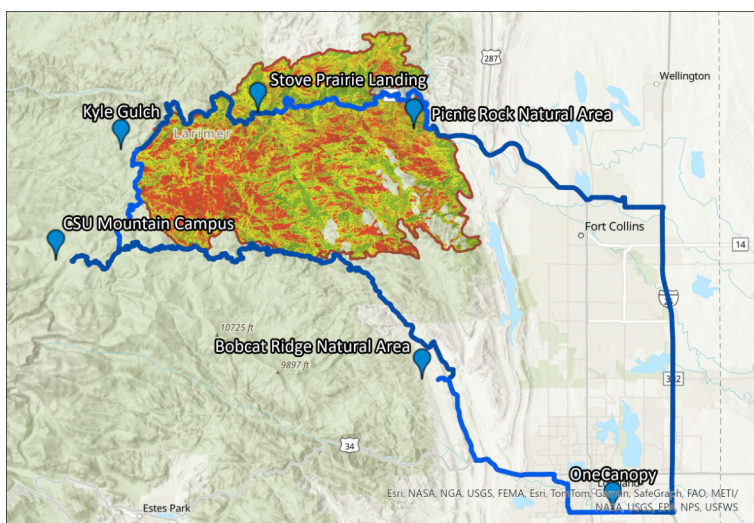
### Picnic Rock Fire (2004)

- Burned 30 March - 5 April
- Cause: yard waste fire
- Area: 9,014 acres



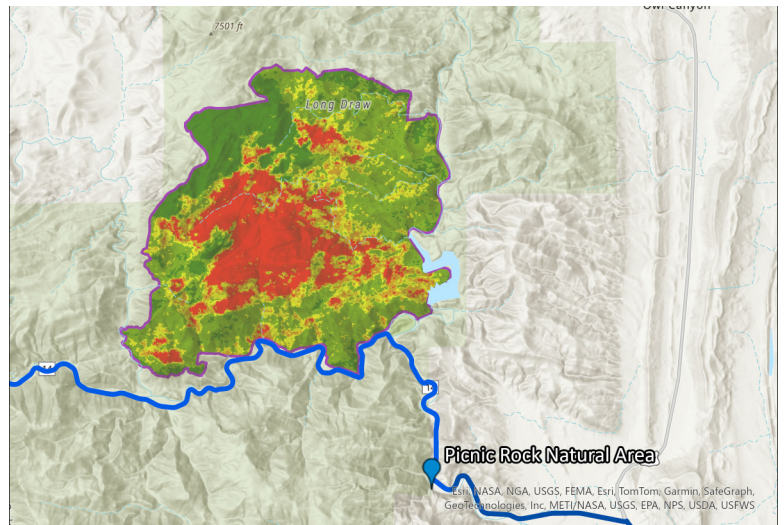
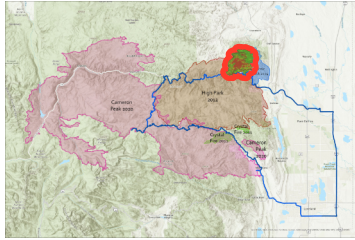
### High Park Fire (2012)

- Burned 9 June - 2 July
- Cause: lightning strike
- Area: 90,769 acres
- Affected watersheds for Larimer County, Greeley, Tri-Districts area



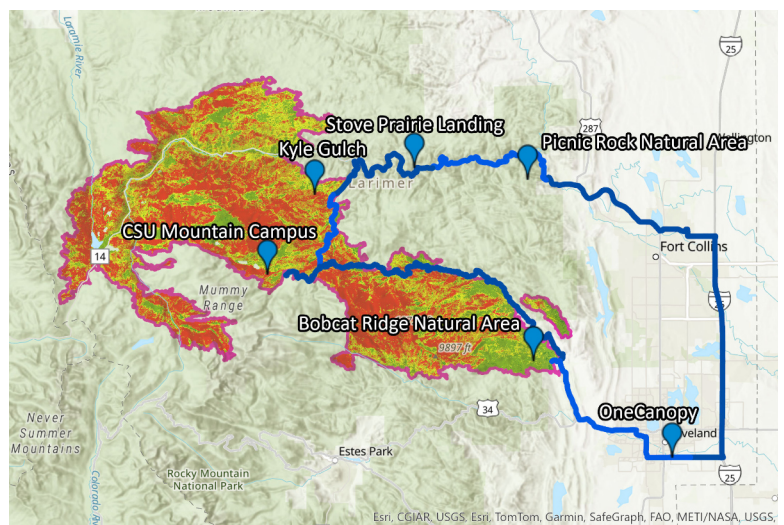
## Hewlett Gulch Fire (2012)

- Burned 14 May - 22 May
- Cause: unattended camp stove
- Area: 7,685 acres



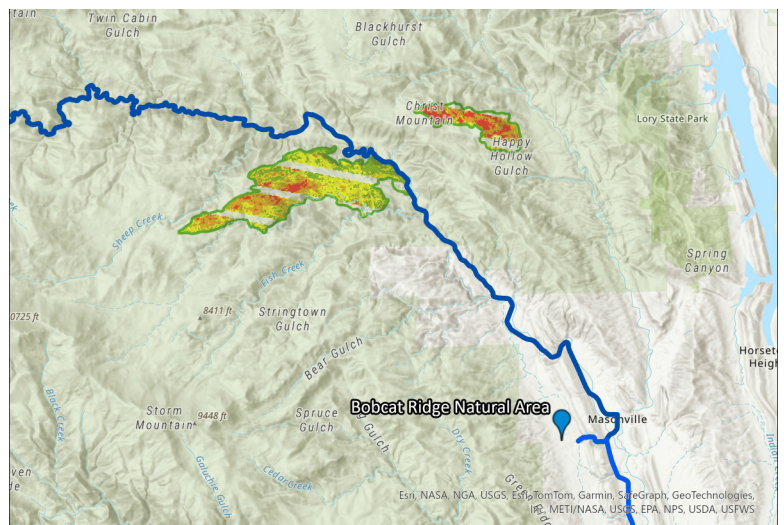
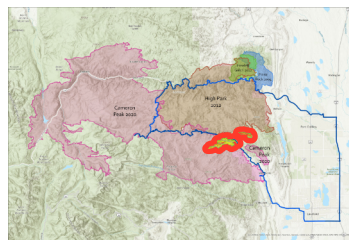
## Cameron Peak Fire (2020)

- Burned 13 Aug 2020 - 12 Jan 2021
- Cause: still under investigation
- Area: 208,910 acres
  - 30,000 acres were within Rocky Mtn. Natl Park



## Crystal Fire (2011)

- Burned 1 April - 11 April
- Cause: arson, later convicted
- Area: 2,855 acres



## Questions to Ponder

- How is the severity of these fires changing over time?
- What is the relationship between topography and burn intensity?
- When does adding seed improve plant community recovery and when may it interfere with meeting project goals?
- What efforts seem to be helping the most?