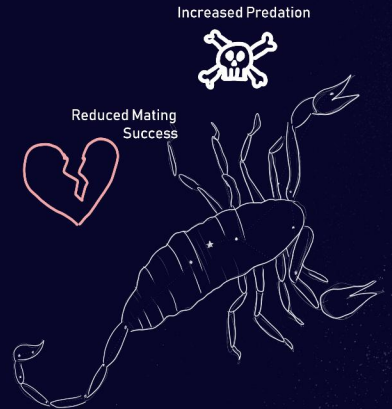
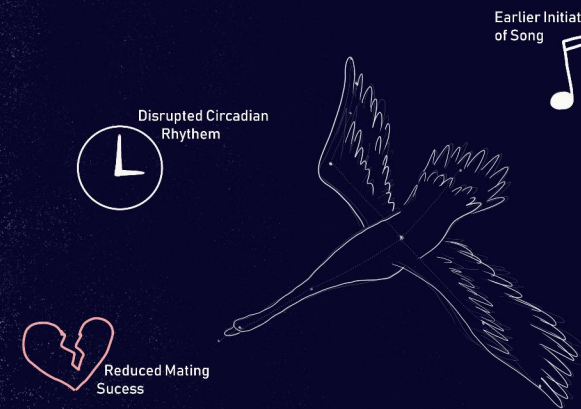
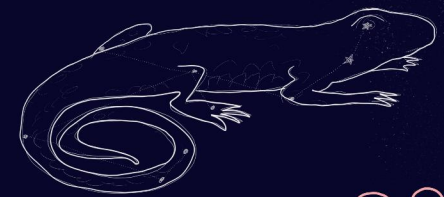
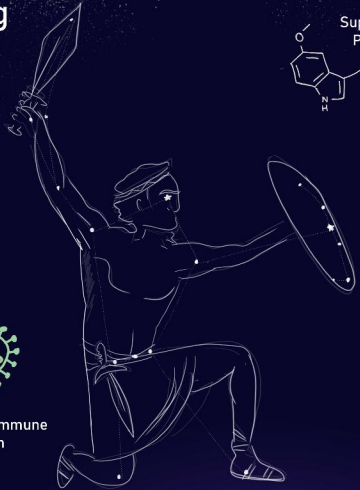
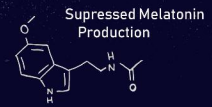


A Conceptual Understanding of Anthropogenic Lighting

Julianne Nikirk¹, Jeremy White^{1,2}, Carlos Linares¹, Lisa Angeloni², George Wittmeyer¹, Kevin Crooks¹, Brett Seymoure^{1,2}

¹ Department of Fish, Wildlife, and Conservation Biology, Colorado State University, Fort Collins, CO
² Department of Biology, Colorado State University, Fort Collins, CO

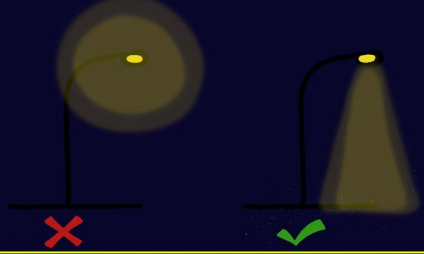


WHAT CAN YOU DO?

Use amber bulbs instead of white/blue toned bulbs



Make sure outdoor lights cut-off appropriately



Turn lights off when not in use and remove them from unnecessary areas

